

Dear Valued Customer,

In order to protect your consumer rights, please ensure that at the time of purchase you fill out the provided warranty certificate, coupled with the retailer stamp so as to ensure valid warranty.

親愛的顧客您好，為了保障您的權益，請您在購買時，立即請經銷商填寫購買日期並蓋店章，也請妥善保存保固書，才能享有本公司之完整售後服務。

# LUXA<sup>2</sup>

A Division of Thermaltake

Product Name* (品名*)				
Serial number* (序號*)				
Date of purchase* (購買日期*)	(AD) 西元	(Year) 年	(Month) 月	(Date) 日
Store of purchase (Official stamp required) 經銷店章* (請務必蓋章保固方為有效)				

- Warranty period begins on the date of purchase of brand new, unused products by first-end user. Please retain receipt and warranty certificate as proof or purchase.
- If within, warranty period, the product is determined defective, please return to the original store of purchase for a replacement.
- For additional services, please email [info@luxa2.com](mailto:info@luxa2.com) or contact one of our global offices, of which, details can be found on the previous page.
- 未蓋店章及未填上購買日期，則保固期限以產品序列號所查詢到的出貨日期開始計算。
- 送修流程：聯絡原購買店家→退回不良品→店家維修→返修回顧客
- 如需其他服務，請寄電子郵件至 [info@luxa2.com](mailto:info@luxa2.com) 信箱或直接聯繫LUXA2全球分公司暨辦事處，詳情請洽LUXA2官網<http://www.luxa2.com.tw/>

## Groovy Duo

Live Wireless Speaker

### QUICK START GUIDE

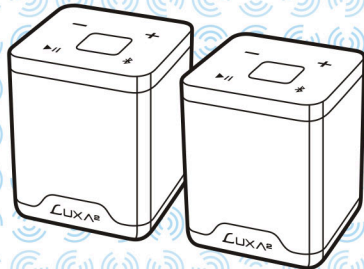
**BLUETOOTH  
MINI  
HOME THEATRE**

**Stereo  
Surround**





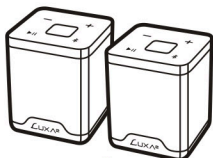
## Groovy Duo Live Wireless Speaker



Up to 8 hours playing time



## Package Contents



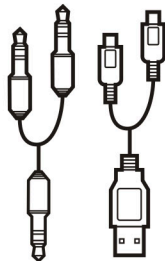
x2



x1



x1



x1

x1

## English

### Specifications:

- Bluetooth Module: CSR V2.1 + EDR
- Receive Sensitivity: -80dBm@0.1%BER
- Wireless Range: <=10m
- Audio SNR: 70dB
- Power Source: 900mAh / 3.7 V / 3.3 Wh
- Playing time: up to 8 hours
- Charging time: 2.5 hours
- Audio Output Power: 3W X 2 (Max.)
- Audio Frequency Responses: 90Hz – 20kHz
- Dimension: 65 x 80 x 65 mm
- Weight: 538g

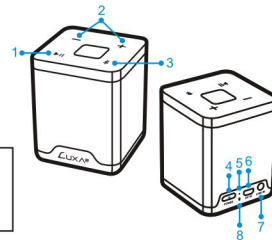
### Buttons & Controls:

1. Play/Pause
2. Volume control
3. Bluetooth
4. On/Off switch
5. Battery capacity indicator
6. Micro USB input
7. Aux-In Port
8. Reset

### Warnings:

- Don't drop, disassemble or attempt to repair the speaker by yourself.
- Avoid exposure to water or high humidity.
- Don't expose to any heat source.

Bluetooth Indicator (Mono)	Status
Quickly Flashes RED/BLUE	Pairing Mode
BLUE	Paired
Bluetooth Indicator (Stereo)	Status
Quickly Flashes BLUE/GREEN	Pairing Mode
GREEN	Paired



## Deutsch

### Technische Daten:

- Bluetooth-Modul: CSR V2.1 + EDR
- Empfangsempfindlichkeit: -80 dBm@0,1 % BER
- Wireless-Reichweite: <=10 m
- Audio-SNR: 70 dB
- Stromversorgung: 900mAh / 3,7 V / 3,3 Wh
- Spielzeit: Bis zu acht Stunden
- Ladezeit: 2,5 Stunden
- Audio-Ausgangsleistung: 3 W x 2 (max.)
- Audio-Frequenzantworten: 90 Hz – 20 kHz
- Abmessungen: 65 x 80 x 65 mm
- Gewicht: 538g

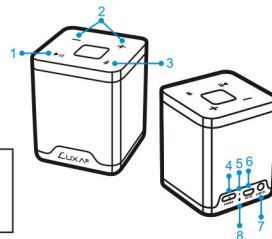
### Buttons & Controls :

1. Play/Pause
2. Lautstärkeregelung
3. Bluetooth
4. On/Off Schalter
5. Batterieanzeige
6. Micro USB Eingang
7. Aux-In Port
8. Rücksetzen

### Warnungen:

- Nicht fallen lassen, zerlegen oder versuchen, den Lautsprecher selbst zu reparieren.
- Kontakt mit Wasser oder hoher Luftfeuchtigkeit vermeiden.
- Keinen Wärmequellen ausgesetzt.

Bluetooth-Anzeige (Mono)	Status
Blinkt schnell RED / BLUE	Pairing-Modus
BLUE	gepaart
Bluetooth-Anzeige (Stereo)	Status
Blinkt schnell blau / grün	Pairing-Modus
GREEN	gepaart

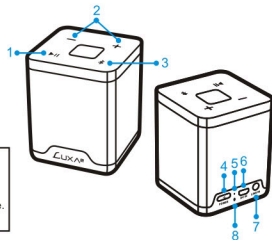


## Français

### Caractéristiques:

- Module Bluetooth : CSR V2.1 + EDR
- Sensibilité de réception : <math>-80\text{ dBm}@0.1\% \text{ BER}</math>
- Portée sans fil : <math>\leq 10\text{ m}</math>
- Rapport signal/bruit audio : <math>70\text{ dB}</math>
- Source d'alimentation : <math>900\text{mAh} / 3.7\text{ V} / 3.3\text{ Wh}</math>
- Temps de lecture : jusqu'à 8 heures
- Temps de charge : 2,5 heures
- Puissance de sortie audio : <math>3\text{ W} \times 2 \text{ (Max.)}</math>
- Réponses en fréquence audio : <math>90\text{ Hz} \text{ à } 20\text{ kHz}</math>
- Dimensions : <math>65 \times 80 \times 65\text{ mm}</math>
- Poids : 538g

Indicateur Bluetooth (mono)	statut
Clignotement rapide rouge / BLEU	Mode d'appairage
BLEU	jumelé
Indicateur Bluetooth (stéréo)	statut
Clignote rapidement BLEU / VERT	Mode d'appairage
VERT	jumelé



### Boutons et contrôles:

1. Fonctions Lecture / Pause
2. Commande du volume
3. Bluetooth
4. Interrupteur On/Off
5. Indicateur de capacité de batterie
6. Entrée micro USB
7. Port d'entrée auxiliaire
8. Remettre

### ⚠ Avertissements :

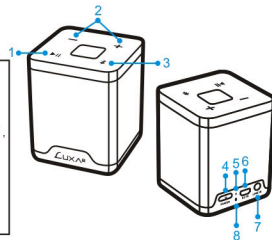
- Ne pas laisser tomber, démonter ou tenter de réparer le haut-parleur par vous-même.
- Éviter l'exposition à l'eau ou à une humidité élevée.
- Ne pas exposer à une source de chaleur.

## 繁體中文

### 規格:

- 藍牙模組: CSR V2.1 + EDR
- 接收靈敏度: <math>-80\text{ dBm}@0.1\% \text{ BER}</math>
- 播放距離: <math>\leq 10\text{ 公尺}</math>
- 音頻信噪比: <math>70\text{ dB}</math>
- 電池: <math>900\text{mAh} / 3.7\text{V}</math> (內建可充式鋰電池) / <math>3.3\text{ Wh}</math>
- 播放時間: <math>8\text{ 小時}</math>以上
- 充電時間: 2.5 小時
- 輸出功率: <math>3\text{W} \times 2 \text{ (Max.)}</math>
- 頻率響應: <math>90\text{ Hz} - 20\text{ kHz}</math>
- 尺寸: <math>65 \times 80 \times 65\text{ mm}</math>
- 重量: 538g

藍牙指示燈 (單聲道)	狀態
快速閃爍紅/藍	配對模式
藍色	配對
藍牙指示燈 (立體聲)	狀態
快速閃爍藍/綠	配對模式
綠色	配對



### 按鈕和控制:

1. 播放/暫停
2. 音量控制
3. 藍牙
4. 電源開關
5. 充電指示燈
6. Micro USB 輸入端
7. Aux-In 端子
8. 重設鍵

### ⚠ 警告:

- 請勿任意拆卸、拆解或改造喇叭。
  - 請勿將移動電源置於潮濕的環境。
  - 請遠離火源和高溫環境。
- 根據交通部 低功率射頻電機之使用不得影響飛航安全及干擾合法通信。經發現有干擾現象時，應立即停用，並改善至無干擾時方得繼續使用。前項合法通信，指依電信法規定作業之無線電通信。低功率射頻電機應忍受合法通信或工業、科學及醫療用電磁輻射性電機設備之干擾。

## 日本語

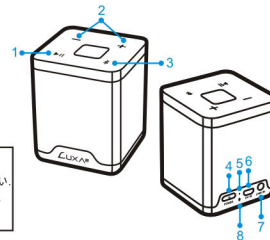
### 仕様:

- Bluetooth モジュール: CSR V2.1 + EDR
- 受信感度: <math>-80\text{ dBm}@0.1\% \text{ BER}</math>
- ワイヤレスレンジ: <math>\leq 10\text{ m}</math>
- オーディオSNR: <math>70\text{ dB}</math>
- 電源出力: <math>900\text{mAh} / 3.7\text{ V} / 3.3\text{ Wh}</math>
- 連続8時間再生可能
- 充電時間: 2.5時間
- オーディオ出力: <math>3\text{W} \times 2 \text{ (最大)}</math>
- オーディオ周波数: <math>90\text{ Hz} - 20\text{ kHz}</math>
- 外形寸法: <math>65 \times 80 \times 65\text{ mm}</math>
- 重量: 538g

Bluetoothのインジケータ (モノラル)	ステータス
すぐに赤/青が点滅	ペアリングモード
ブルー	対を成す
Bluetoothのインジケータ (ステレオ)	ステータス
すぐに青/緑が点滅	ペアリングモード
グリーン	対を成す

### ボタン&コントロール:

1. 再生/停止
2. 音量調整
3. Bluetooth
4. オン / オフ
5. バッテリー容量表記
6. マイクロUSBインポート
7. Aux-In ポート
8. リセット



### ⚠ ご注意:

- たまつきたり、ご自分で修理等を試みないでください。
- 水に濡れたり高温の場所での使用は避けてください。
- 高熱に発する場所での使用は避けてください。

## Русский

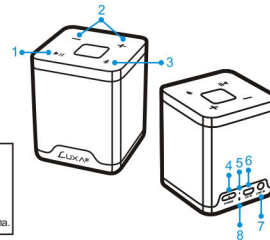
### Технические характеристики:

- Модуль Bluetooth: CSR V2.1 + EDR
- Чувствительность приемника: <math>-80\text{ dBm при } 0.1\% \text{ BER}</math>
- Радиус действия беспроводной связи: <math>\leq 10\text{ м}</math>
- Соотношение сигнал-шум для звука: <math>70\text{ dB}</math>
- Источник питания: <math>900\text{mAh}/3.7\text{ В}/3.3\text{ В}\cdot\text{ч}</math>
- Время воспроизведения: до 8 часов
- Время зарядки: 2,5 часа
- Выходная мощность звука: <math>3\text{ Вт} \times 2 \text{ (макс.)}</math>
- Диапазон звуковых частот: <math>90\text{ Гц} - 20\text{ кГц}</math>
- Размеры: <math>65 \times 80 \times 65\text{ мм}</math>
- Вес: 538g

Индикатор Bluetooth (моно)	статус
Быстро мигает красным / СИНИЙ	режим сопряжения
СИНИЙ	В паре
Индикатор Bluetooth (стерео)	статус
Быстро мигает синим цветом / ЗЕЛЕНЫЙ	режим сопряжения
ЗЕЛЕНЫЙ	В паре

### Кнопки и управления:

1. Функция воспроизведения/паузы
2. Регулировка уровня громкости
3. Bluetooth
4. Переключатель On/Off
5. Индикатор заряда батареи
6. Вход Micro USB input
7. Порт Aux-In
8. сброс



### ⚠ Предупреждения:

- Не роняйте, не разбирайте и не пытайтесь самостоятельно отремонтировать динамик.
- Не допускайте воздействия воды или высокой влажности.
- Не подвергайте воздействию любого источника тепла.

## Especificaciones:

- Módulo Bluetooth: CSR V2.1 + EDR
- Sensibilidad de recepción: -80 dBm a 0,1% BER
- Alcance inalámbrico: 10 m
- Audio SNR: 70 dB
- Alimentación: 900mAh / 3,7 V / 3,3 Wh
- Tiempo de reproducción: hasta 8 horas
- Tiempo de carga: 2,5 horas
- Potencia de salida de audio: 3 W x 2 (máx.)
- Respuesta en frecuencia: 90 Hz - 20 kHz
- Dimensiones: 65 x 80 x 65 mm
- Peso: 538g

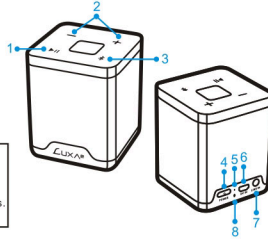
## Botones y controles:

1. Reproducción/pausa
2. Control de volumen
3. Bluetooth
4. Interruptor Encendido/Apagado
5. Indicador de capacidad de la batería
6. Entrada Micro USB
7. Puerto Aux-In
8. Reajustar

### Advertencias:

- No desmonte ni intente reparar el altavoz usted mismo.
- Evite la exposición al agua o a humedades altas.
- Evite la exposición a fuentes de calor.

Indicador Bluetooth (Blanco y negro)	estado
Parpadea en rojo / azul rápidamente	Modo de emparejamiento
AZUL	emparejado
Indicador Bluetooth (estéreo)	estado
Parpadea BLUE / GREEN rápidamente	Modo de emparejamiento
VERDE	emparejado



## العربية

### المواصفات:

نموذج: المسؤولة الاجتماعية للشركات V2.1 + EDR  
 حساسية الاستقبال - 80dBمعدل عند 0.1%BER  
 النطاق اللاسلكي: أقل من أو يساوي 10 أمتار  
 معدل الإشارة إلى الضوضاء (SNR) الصوت: 70دبسيل  
 مصدر الأثر: 900ميلي أمبير في الساعة / 3.3  
 فولت / 3.3 وات في الساعة  
 وقت التشغيل: حتى 8 ساعات  
 وقف التحدث: 8 ساعات ونصف  
 حماية مخرجات الصوت: فولت 3 (x 2 الحد الأقصى)  
 استجابات تكرار الصوت: 90هرتز - 20 كيلو هرتز  
 الأبعاد: 65 × 80 × 65مم  
 الوزن: 538جم

### الأزرار وعناصر التحكم

1. تشغيل / إيقاف مؤقت
2. عنصر التحكم في مستوى الصوت
3. بلوتوث
4. مفتاح التشغيل/إيقاف التشغيل
5. مؤشر سرعة البطارية
6. منفذ خرج USB
7. منفذ دخول المكون الإضافي
8. إعادة تعيين

### تحذيرات

- لا تلمس أو تفك أو تحاول إصلاح أو تلمس السماعة بنفسك.
- تجنب تعريض السماعة للماء أو للرطوبة المرغفة.
- لا تقم بتعرض السماعة لأي مصدر حرارة.

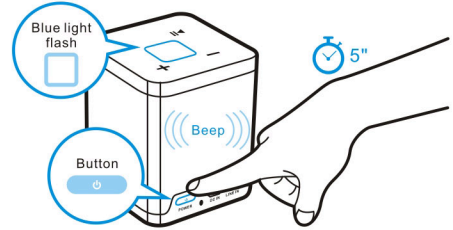


## Pairing a Single Groovy Duo Speaker (Mono)

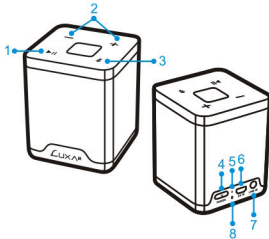
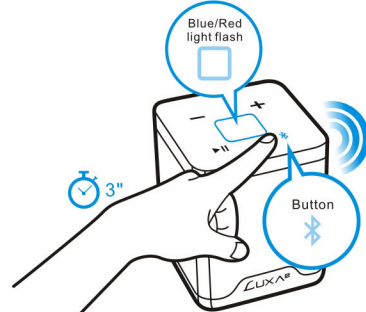
### Instructions for first time pairing

To listen to your music via Bluetooth, you will need to pair your device with the Groovy Duo:

1. Make sure your device has Bluetooth capability
2. Press and hold power button for 5 seconds; indicator will start to flash followed by a beep to confirm activation.



3. Next, press and hold the Bluetooth button for 3 seconds to activate Bluetooth search.

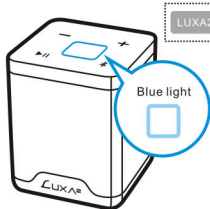




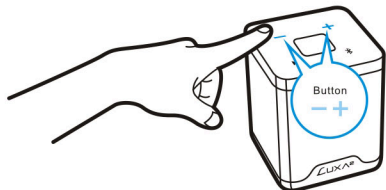


## Pairing a Single Groovy Duo Speaker (Mono)

- Follow the Bluetooth pairing instructions on your device to pair the unit
- Pair your device with the unit by selecting 'GROOVY Duo' from your Bluetooth listings on your device



- Press play on your device and use controls on the unit to adjust desired volume



### NOTE:

- Once you have successfully paired your device, you may not need to repeat the above steps as your device will automatically save this Bluetooth connection into its paired list. If you however unpair your device from the Groovy Duo, the first time pairing steps will apply.

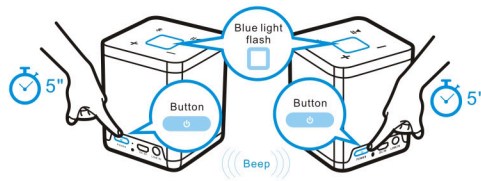


## Pairing two Groovy Duo speakers together (Stereo)

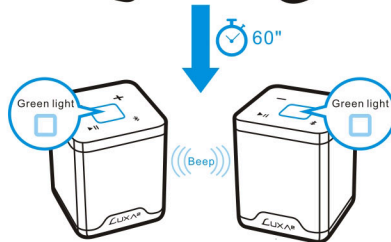
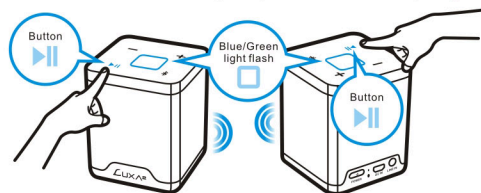
### Instructions for first time pairing

To pair two Groovy Duo speakers together for stereo sound please follow the below steps:

- Turn both speakers on by pressing and holding the power button for 5 seconds; indicator will start to flash followed by a beep.



- Press the Play/Pause button on both speakers to activate pairing; pairing will take 60 seconds followed by a beep to confirm successful pairing.



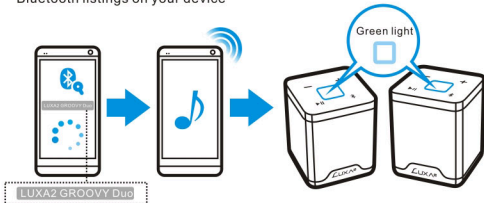


## Pairing two Groovy Duo speakers together (Stereo)

- Next, press and hold the Bluetooth button for 3 seconds on one of the speakers to activate Bluetooth search.



- Follow the Bluetooth pairing instructions on your device to pair the unit
- Pair your device with the unit by selecting 'GROOVY Duo' from your Bluetooth listings on your device



- Press play on your device and use controls on the unit to adjust desired volume

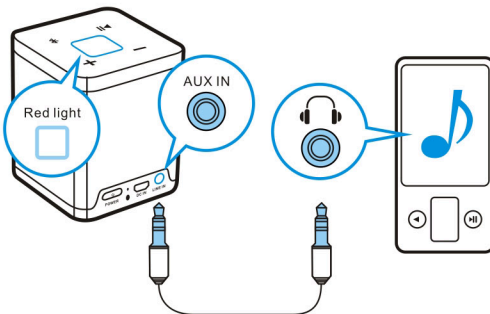


### NOTE:

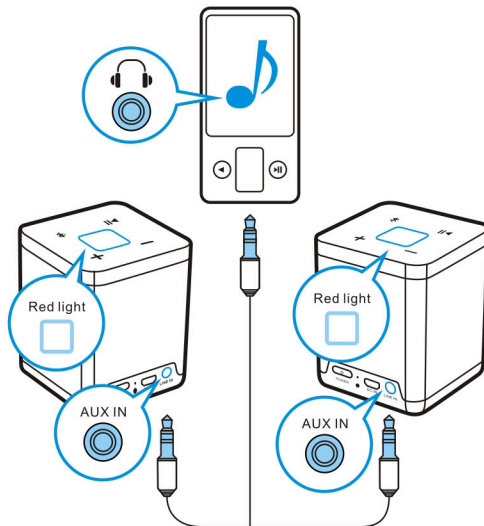
-Once you have successfully paired your device, you may not need to repeat the above steps as your device will automatically save this Bluetooth connection into its paired list. If you however unpair your device from the Groovy Duo, the first time pairing steps will apply.



## AUX In (Mono)



## AUX In (Stereo)



Thank you for choosing LUXA2 products. If you have any question, please contact us by the following information. We will reply you as soon as possible.

## Headquarter

Thermaltake Technology Co., Ltd. - LUXA2 Business Division

TEL : +886-2-8797-5788

FAX : +886-2-8797-5199

E-MAIL: info@luxa2.com

www.luxa2.com.tw

## Overseas Branch

Thermaltake U.S.A. - LUXA2 Division

TEL : +1-626-968-9189

FAX : +1-626-968-7659

E-MAIL: info.usa@luxa2.com

www.luxa2.com

Thermaltake Beijing Co., Ltd. - LUXA2 Division

TEL : +86-10-8288-3703

FAX : +86-10-8288-3302

E-MAIL: info.cn@luxa2.com

www.luxa2.com.cn

Thermaltake Russia Representative Office

TEL : +7-495-739-5906

FAX : +7-495-739-5915

E-MAIL: sales@luxa2.com

www.luxa2.ru

Thermaltake Australia and New Zealand Pty Ltd. - LUXA2 Division

TEL : +61-03-9763-1622

FAX : +61-03-9763-1677

E-MAIL: info.au@luxa2.com

Thermaltake Germany GmbH - LUXA2 Division

TEL : +49(0)40/30-85-86-0

FAX : +49(0)40/30-85-86-89

E-MAIL: info.ge@luxa2.com

www.luxa2.de



## Featured Products

PLACE AND PLAY



**GroovyT**  
Magic Boom Box Speaker

Enjoy a new simpler way to play your music with the GroovyT. Place your smartphone device onto the speaker and the built-in inductive technology does the rest. Enjoy a fuller musical experience with the GroovyT Magic Boom Box.

THE BEST  
FOR YOUR BEST.



**E-One**  
Aluminum Headset Holder

The E-ONE headphone holder provides that all important place to hang your beloved headphones. Made from high quality aluminum and topped off with a diamond cut finish, the E-ONE holder keeps your headphones on standby, on display and your audio needs within an arms grasp.

LIFE'S DAILY  
POWER SOLUTION!



**EnerG 8800mAh**  
Portable Battery Pack

The EnerG 8800mAh provides the perfect power solution to meet the ever demanding power needs of your daily life. The higher capacity and provision of duo USB charging ports provides simultaneous charging of multiple devices, whilst maintaining a light and compact dimension to take on your travels.

ENJOY TRUE AUDIO  
AND WIRELESS FREEDOM



**GroovyW**  
Bluetooth Speaker with Wireless Power Station

GroovyW is the World's First Multi-Functional Bluetooth Wireless Music Speaker with Near Field Communication (NFC) technology and Wireless Charging Station (Qi Compatible), optimized for use with the LUXA2 Groovy Audio Center App.

KEEPING UP  
YOUR LIFESTYLE!



**EnerG 10400mAh**  
Portable Battery Pack

Carrying this amount of power, the EnerG 10400mAh is the King of the EnerG series and is particularly suited to those planning to go on long vacations, business trips and places where a power outlet is not readily available. You won't need to worry about running out of power with this beast in hand.

POWER UP IN STYLE!



**EnerG 6600mAh**  
Portable Battery Pack

The lightweight and compact design of the EnerG 6600mAh fits in the palm of your hands and conveniently into your trouser pockets and bag with minimal fuss; providing safe and reliable charging for the majority of your devices on the go.